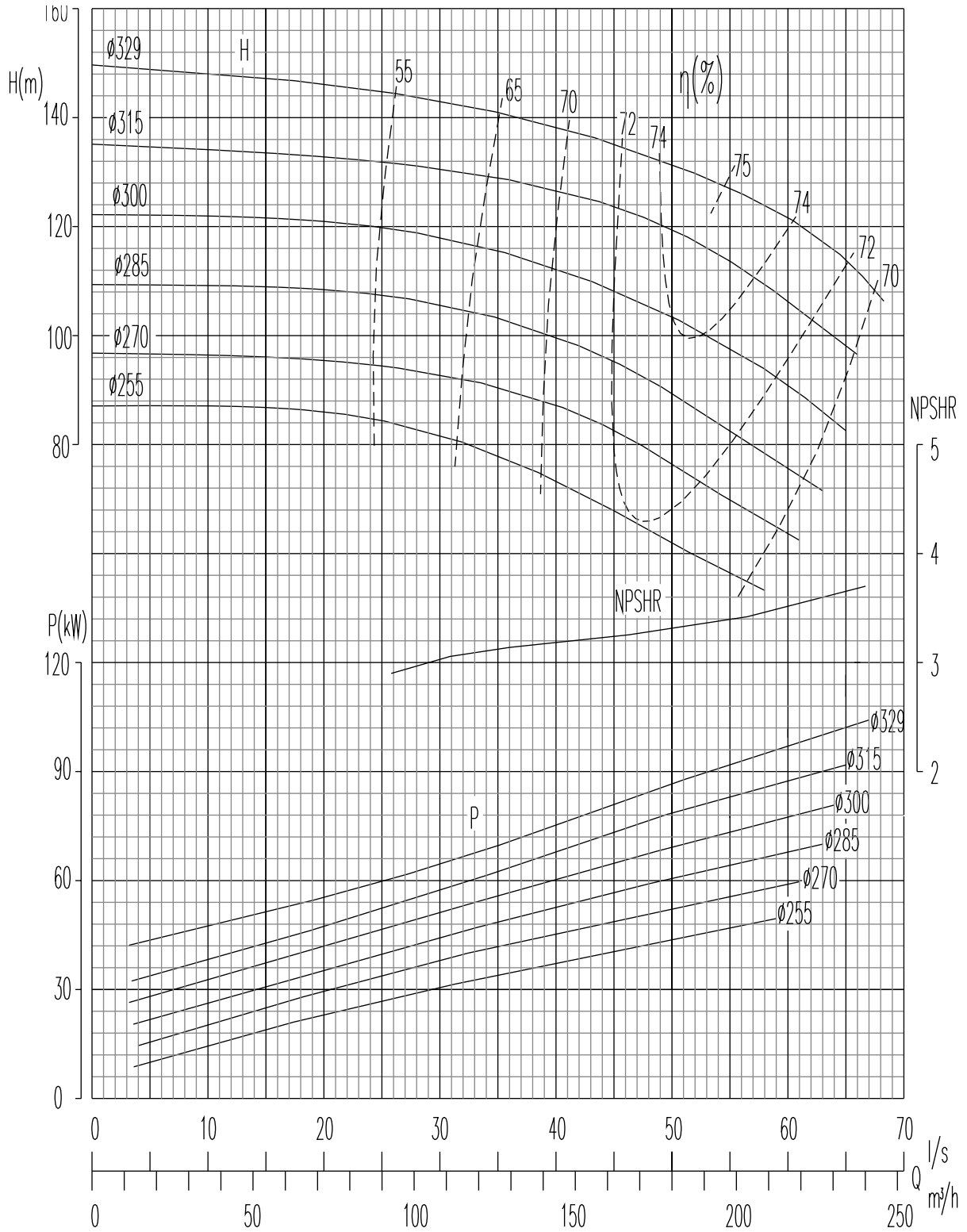
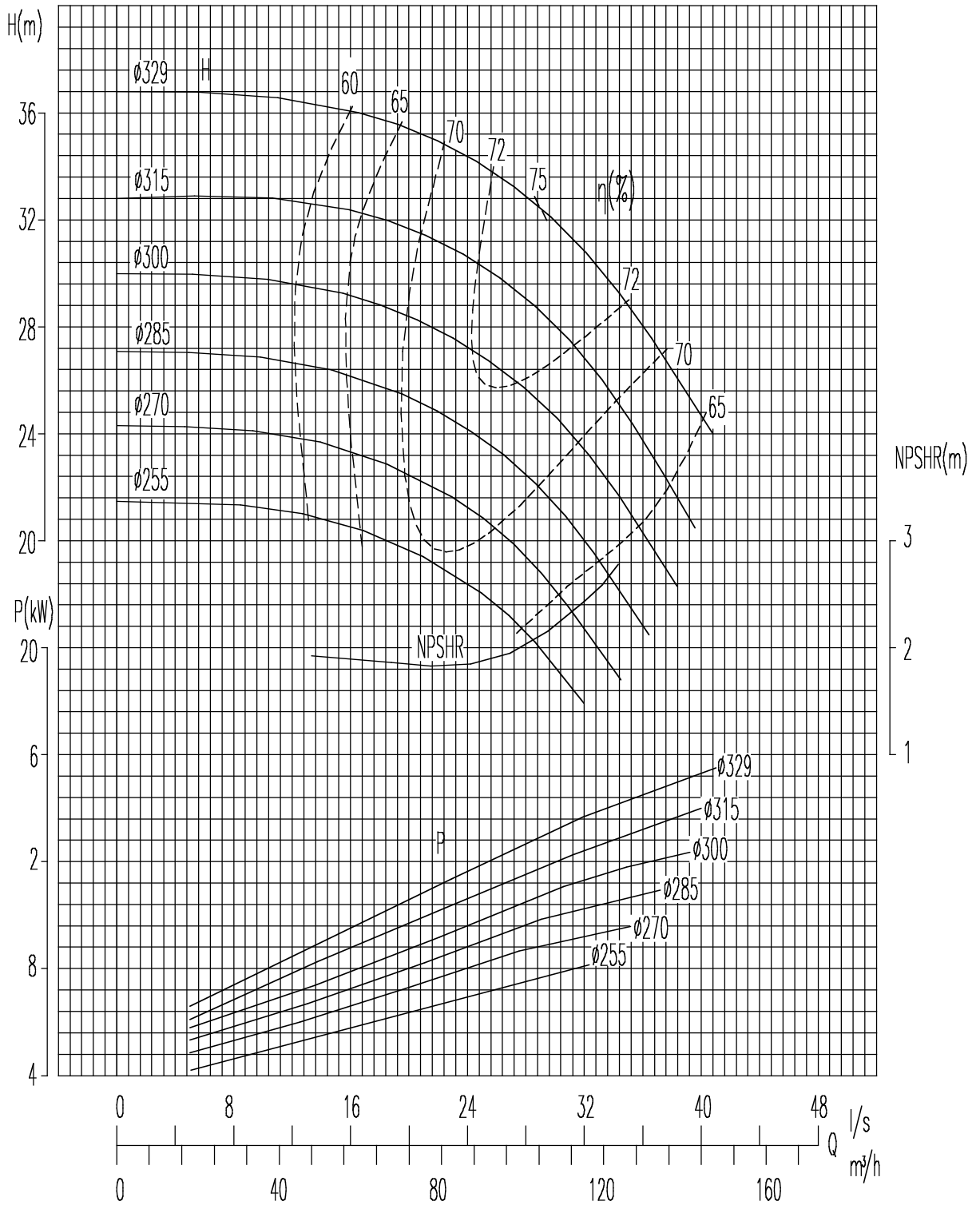


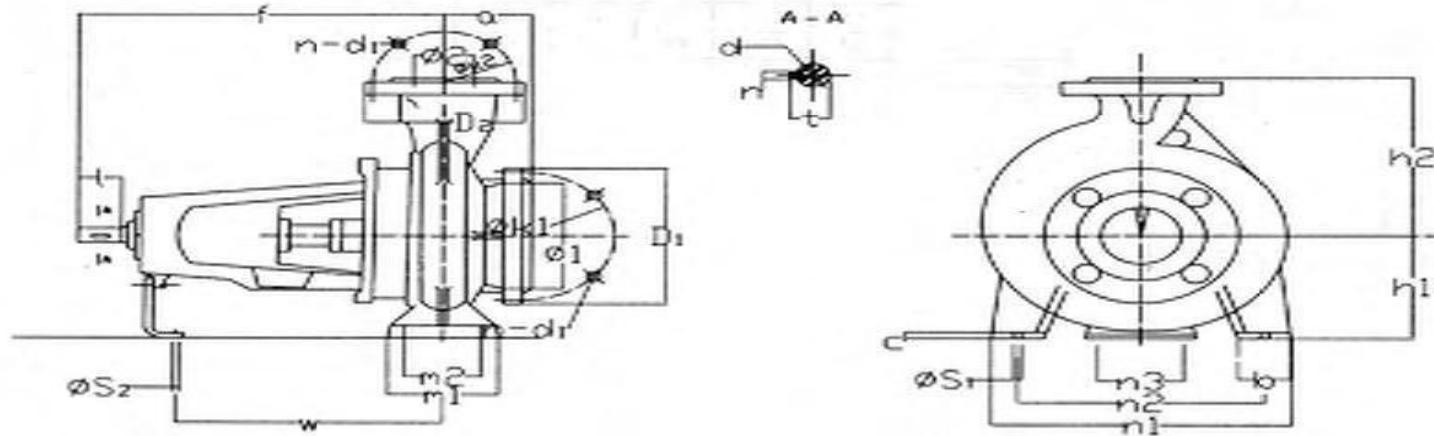
**PUMP MODEL 80 - 32**  
**SPEED 2pole**



**PUMP MODEL 80 - 32**  
**SPEED 4pole**



Overall and Mounting Dimensions(mm)



Pump Type	Frame Size	Pump Dimensions						Pump Foot Dimensions									Shaft End				
		1 - Suc	2 - Dis	a	f	h1	h2	b	c	m1	m2	n1	n2	n3	s1	s2	w	d	l	t	u
<b>80-32H</b>	45A	100	80	125	521	250	315	80	16	160	120	400	315	110	17.5	14	363	42	110	45	12
<b>80-32</b>	35	100	80	125	470	250	315	80	16	160	120	400	315	110	17.5	14	342	32	80	35	10

\*\* AIX 80-32 is our standard, AIX 80-32H is for High Speed Operations and therefore has a Larger Bearing Housing, Casing Cover, Bearings & Shaft \*\*